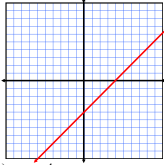


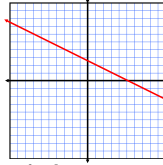
Algebra I

8-2

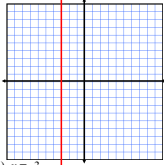
Graphing Equations by Plotting Points



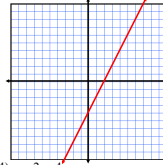
1) $x - y = 4$



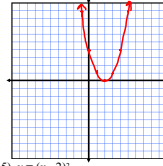
2) $x + 2y = 5$



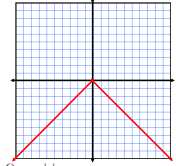
3) $x = -3$



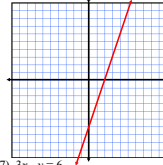
4) $y = 2x - 4$



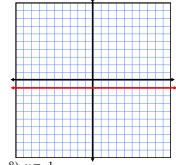
5) $y = (x - 2)^2$



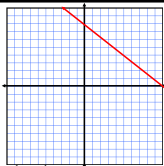
6) $y = -|x|$



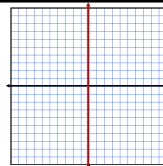
7) $3x - y = 6$



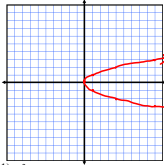
8) $y = -1$



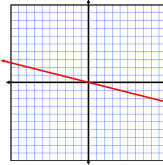
9) $\frac{1}{2}x + \frac{1}{4}y = 2$



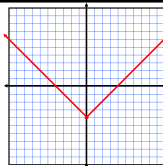
10) $x = 0$



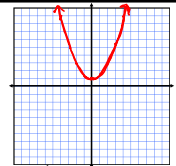
11) $y^2 = x$



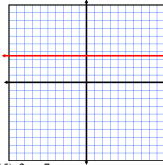
12) $\frac{5}{4} + y = 0$



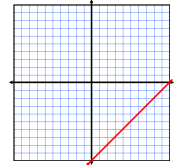
13) $y = |x| - 4$



14) $y = \frac{1}{2}x^2 + 1$



15) $2y = 7$



16) $x - y = 10$